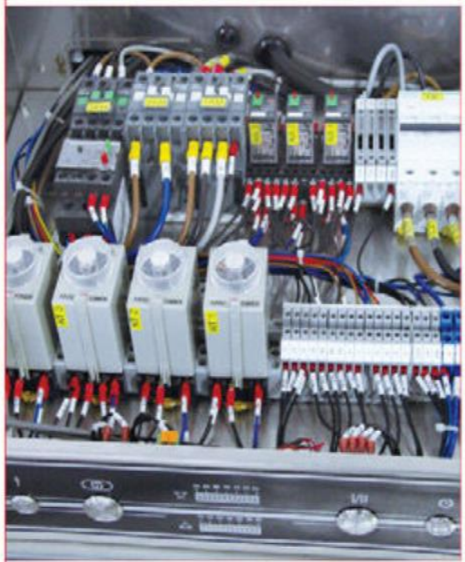
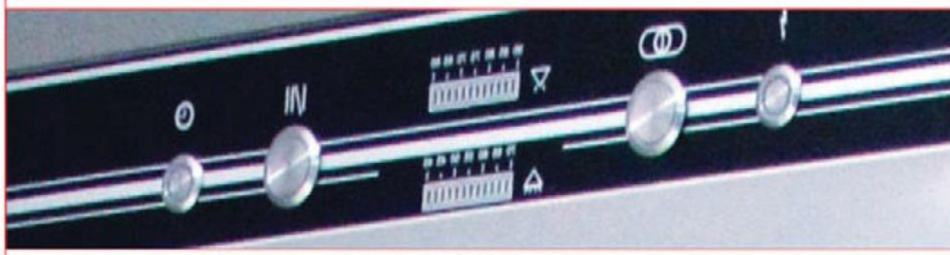
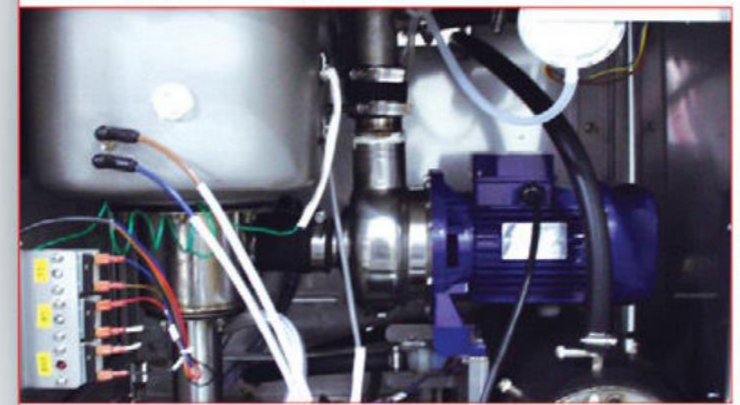
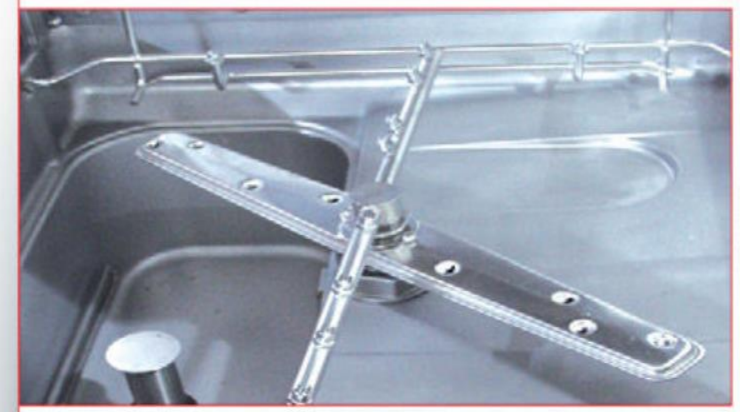


GT-D1MDD



ENERGY EFFICIENCY DOOR TYPE DISH WASHER **GT-D1M DD**



Characteristics

- Deep-drawing wash tank ▶ Allows no place for soil hiding
- Double layer door design ▶ Ensure heat retention
- Mechanical circuit control ▶ Minimizes down time & repair cost
- HACCP certified machine ▶ Ensure hygiene standard
- 1.25 HP powerful washing pressure ▶ Superior washing results
- All stainless steel wash tank components ▶ Durable & reliable

Technical Data	GT-D1MDD
Wash tank heater	2kW
Wash tank capacity	20 ltr
Booster tank capacity	10 ltr
Machine net weight	120 kg
Loading height	400 mm
Wash pump	1.25 HP
Rinse pump	0.25 kW
Booster heater	1 x 9 kW
Machine capacity	60 or 30 racks / hr
Power supply	415V/50Hz/3Phase
Rack size	500 mm x 500 mm
Wash cycle time	60 or 180 sec (selectable)
Dimension	W700mmxD790mmxH1640mm
Electrical loading	10kW/15A/3Phase (alternative heating)

