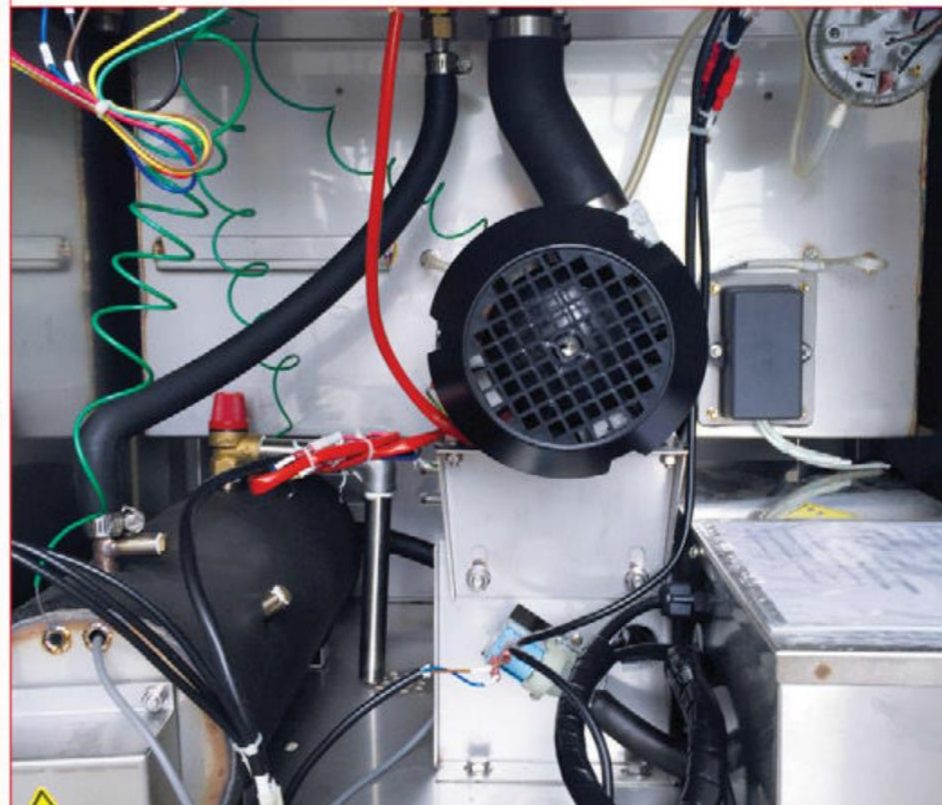
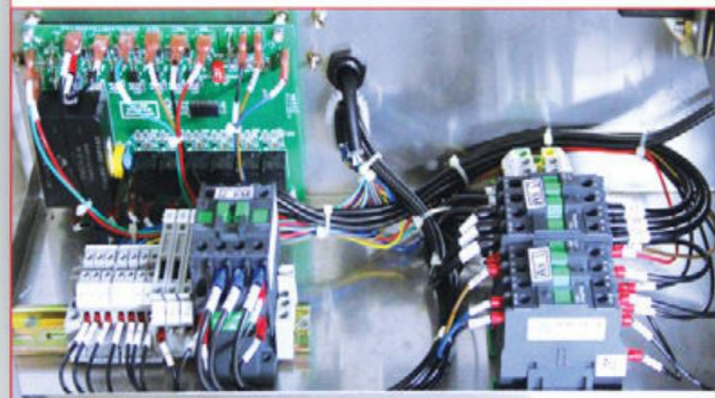
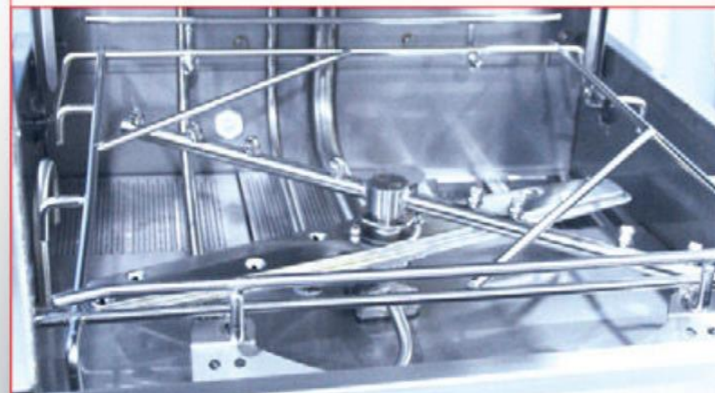


# GT-D1MEC



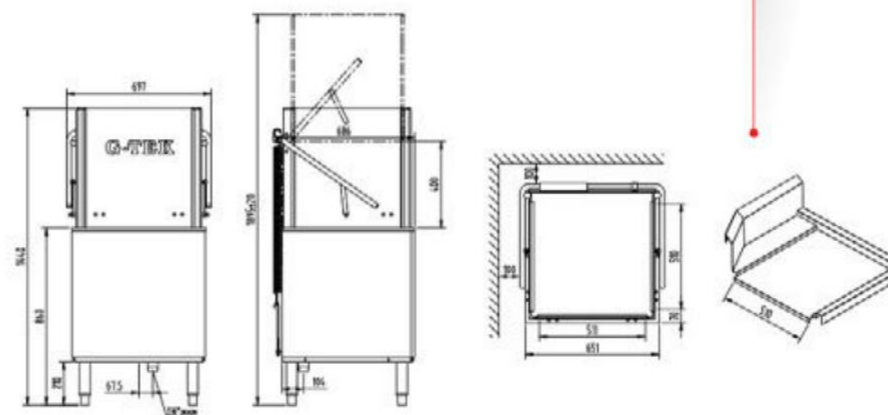
ECONOMICAL DOOR TYPE DISH WASHER

GT-D1M EC



## Characteristics

- HACCP certified machine ▶ Ensure hygiene standard
- Automatic operating system ▶ Easy to operate
- Reliable circuit board control ▶ Convenience for service
- All stainless steel wash tank components ▶ Durable & reliable



Technical Data	GT-D1MEC
Wash pump	1 HP
Wash tank heater	3kW
Wash tank capacity	36 ltr
Booster tank capacity	10 ltr
Machine net weight	122kg
Loading height	400 mm
Rinse pump	Optional
Booster heater	1 x 9kW
Machine capacity	60 or 30 racks / hr
Power supply	415V / 50Hz / 3 Phase
Rack size	500 mm x 500 mm
Wash cycle time	60 or 180 sec (selectable)
Dimension	W 697 mm x D 683 mm x H 1440 mm
Electrical loading	10 kW / 15 A / 3 Phase (alternative heating)