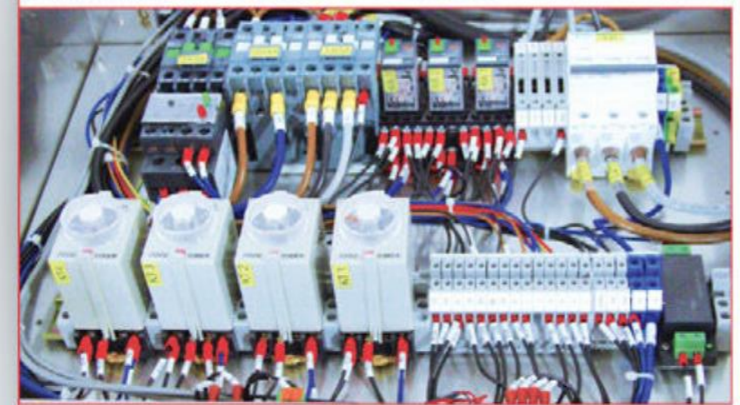


GT-D1MHR



DOOR TYPE DISHWASHER WITH HEAT RECOVERY GT-D1M HR



Characteristics

- Mechanical circuit control ▶ Minimizes down time & repair cost
- HACCP certified machine ▶ Ensure hygiene standard
- Built-in heat recovery system ▶ Reduce electricity costs
- Highly efficient performance ▶ Reduce labor costs
- 1.25 HP powerful washing pressure ▶ Superior washing results
- All stainless steel wash tank components ▶ Durable & reliable

Technical Data	GT-D1MHR
Heat recovery tank capacity	8 ltr
Tank heater	2kW
Booster tank capacity	16 ltr
Wash tank capacity	36 ltr
Machine net weight	128kg
Wash pump	1.25HP
Loading height	400mm
Rinse pump	0.25 kW
Booster heater	2 x 1 kW
Machine capacity	60 or 45 racks / hr
Power supply	230V/50Hz/1 Phase
Rack size	500mm x 500mm
Wash cycle time	70 or 100 sec (selectable)
Dimension	W697mm x D683mm x H1578mm
Electrical loading	3.5 kW / 15 A / 3 Phase (alternative heating)

