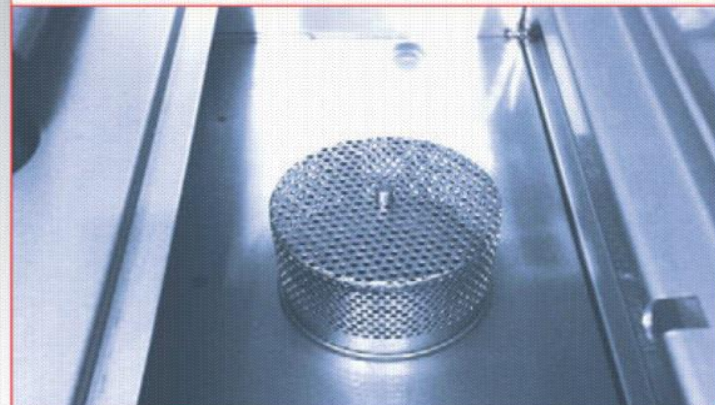
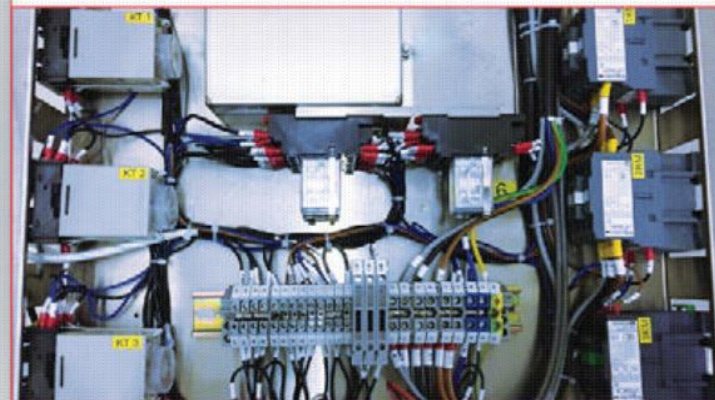
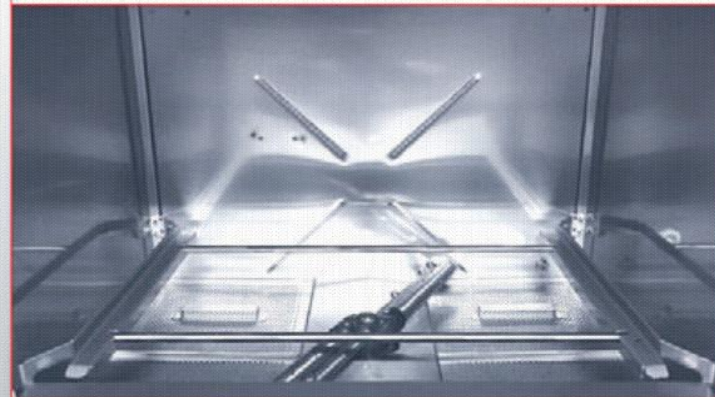


# GT-U1M



UNDERCOUNTER GLASS AND DISH WASHER

GT-U1M



## Characteristics

- Silent operation ▶ Best suit to use at bar counter
- HACCP certified machine ▶ Ensure hygiene standard
- Mechanical circuit control ▶ Minimizes down time & repair cost
- Powerful washing pressure ▶ Consistent washing results
- All stainless steel sealed cabin ▶ Durable & reliable
- Adjustable mechanical cycle time & temp. ▶ Easily adjustable to max. needs

## Technical Data

## GT-U1M

|                       |  |
|-----------------------|--|
| Wash tank heater      | 3 kW   |
| Booster tank capacity | 5 ltr  |
| Wash tank capacity    | 35 ltr   |
| Machine net weight    | 70 kg  |
| Booster heater        | 4.5 kW   |
| Wash pump             | 0.62 kW  |
| Loading height        | 310 mm   |
| Machine capacity      | 20 or 40 racks   |
| Rinse usage           | 2.5 ltr/cycle  |
| Rack size             | 500 mm x 500 mm  |
| Wash cycle time       | 90 or 180 sec (selectable)                                   |
| Dimension             | W600mm x D610mm x H825mm                                     |
| Electrical loading    | 5.50 kW (alternative heating)                                |
| Powersupply           | 415V / 50Hz / 3Phase (7.5A) or<br>220V / 50Hz / 1Phase (24A) |

